

Study of mangrove biomass at Pacific Reef Fisheries Prawn Farm: Alva, Queensland.

Mark Spears, Gassman Development Perspectives. May 2016.

Introduction

Gassman Development Perspectives (GDP) was commissioned by Pacific Reef Fisheries to undertake a broad scale assessment of the approximate total biomass of mangroves present on the Pacific Reef Fisheries Alva prawn farm located at Lot 1, Trent Road, Alva (Figure 1). The purpose of this assessment was to continue to collect data on the biomass of mangroves present on the farm to continue to track the changes in approximate mangrove biomass present on the farm.

The mangrove communities present on the land occupied by the farm have been artificially established and form part of the Pacific Reef Fisheries discharge water treatment system. Prior to the construction and operation of the aquaculture facility, the mangrove cover on the subject land was minimal.

Methodology

The same four (4) mangrove areas were investigated as last monitoring occasion for consistency. These areas were considered to represent a robust cross section of different mangrove communities present on the subject site. The locations of these study areas are represented in Figure 2. At each location, a permanent quadrat was established of an appropriate size considered the surrounding waterways and infrastructure. The dimensions of each quadrat are outlined in Table 1 below.

Table 1 – Size and dimensions of sample quadrats

| Quadrat Number | Quadrat Size |
|-----------------------|----------------------------|
| 1 | 11x20m = 220m ² |
| 2 | 8x40m = 320m ² |
| 3 | 20x20m = 400m ² |
| 4 | 60x5m = 300m ² |



gassman development perspectives | planning design environment surveying

Brisbane Office
Level 8
97 Creek Street Brisbane Q. 4000
t: (07) 32216732
f: (07) 32217308
e: mail@gassman.com.au

Gold Coast and Logan Office
Access Business Park
76 Business Street Yatala Q. 4207
t: (07) 38073333
f: (07) 32875461
w: www.gassman.com.au

| Issue | Date | Description | SJH DRN | MDS CHK |
|-------|----------|----------------|------------|------------|
| - | 05-05-14 | ORIGINAL ISSUE | | |

Project: Trent Road, Alva Beach
Lot 1 on RP804106

Client: Pacific Reef Fisheries

© 2012 Gassman Development Perspectives
All rights reserved. No part of this document may be reproduced or transmitted in any form or by any means, electronic, mechanical, photocopying, recording, or otherwise, without the written permission of Gassman Development Perspectives.

NOTE:
The details of this plan have been prepared based on the most current Digital Cadastral Data Base (DCDB) information available from Queensland Department of Environment and Resource Management and is subject to survey.

Scale at A3: -

Date: 05-05-14

Design: MDS

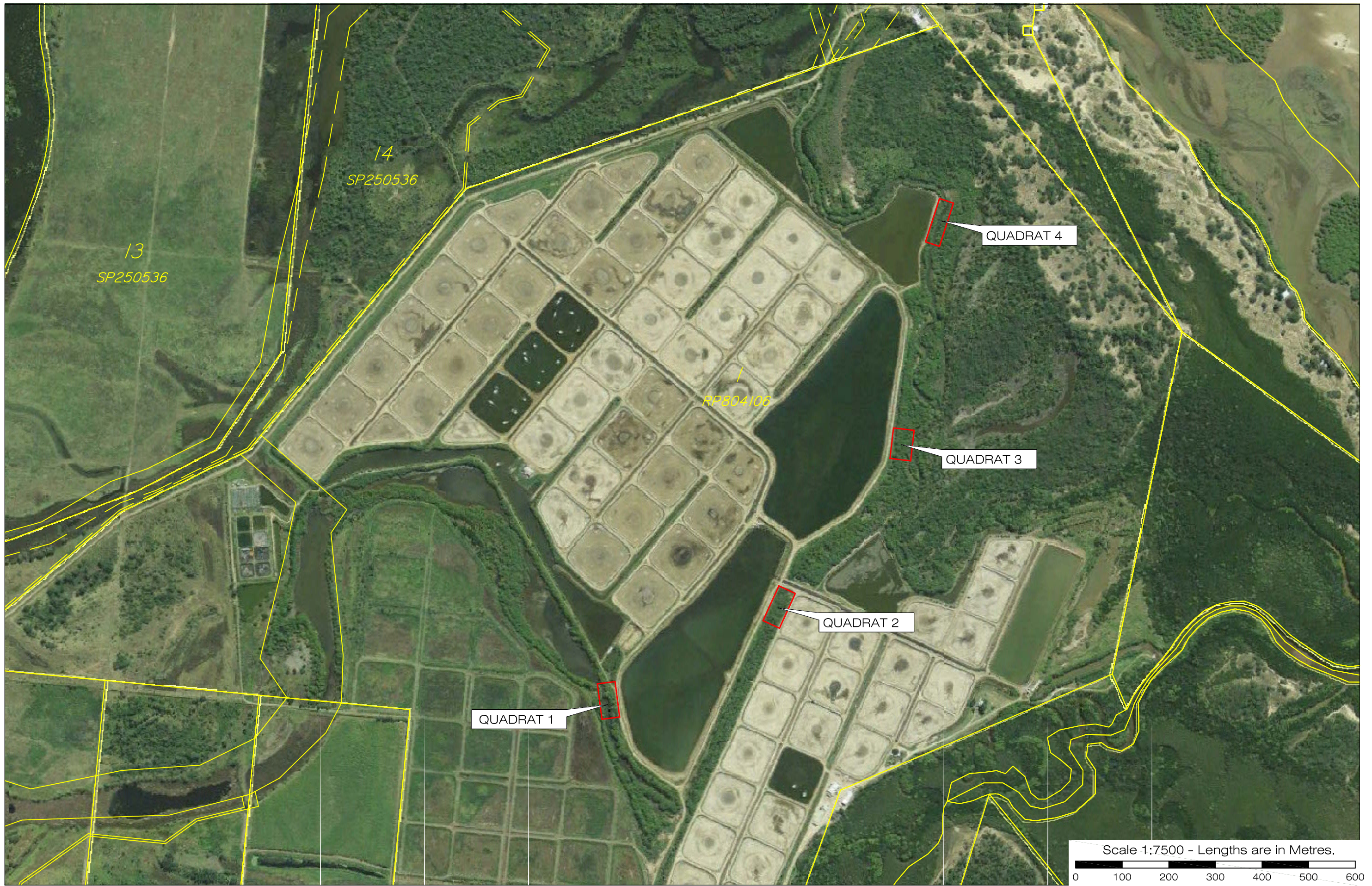
Drawn: SJH

Checked: MDS

Drawing Title: Figure 1 Aerial Map

Drawing No: FIGURE1

Revision No:



Scale 1:7500 - Lengths are in Metres.
 0 100 200 300 400 500 600

gassman development perspectives | planning design environment surveying

Brisbane Office
 Level 8
 97 Creek Street Brisbane Q. 4000
 t: (07) 32216732
 f: (07) 32217308
 e: mail@gassman.com.au

Gold Coast and Logan Office
 Access Business Park
 76 Business Street Yatala Q. 4207
 t: (07) 38073333
 f: (07) 32875461
 w: www.gassman.com.au

| Issue | Date | Description | DRN | CHK |
|-------|----------|----------------|-----|-----|
| - | 05-05-14 | ORIGINAL ISSUE | SJH | MDS |

Project: Trent Road, Alva Beach
 Lot 1 on RP804106

Client: Pacific Reef Fisheries

©2012 Gassman Development Perspectives
 All rights reserved. No part of this document may be reproduced or transmitted in any form or by any means, electronic, mechanical, photocopying, recording, or otherwise, without the written permission of Gassman Development Perspectives.

NOTE:
 The details of this plan have been prepared based on the most current Digital Cadastral Data Base (DCDB) information available from Queensland Department of Environment and Resource Management and is subject to survey.

Scale at A3: 1:7500
 Date: 05-05-14
 Design: MDS
 Drawn: SJH
 Checked: MDS

Drawing Title:
 Figure 2
 Location of Study Quadrats

Drawing No:
 FIGURE2

Revision No:

The same quadrats utilised for the baseline survey were examined on this occasion. A GPS location was taken at each of the quadrats. At each location, all mangroves present were identified to species level and individual trees counted. Counts were divided into trees over 4m in height and trees under 4m in height. The dominant canopy height was also recorded. Photographs taken at each quadrat is included in Appendix 1.

This study was only commissioned at a broad scale and as a result, specific measurements such as diameter at breast height (DBH), individual tree heights and wood biomass were not collected. The basis of estimating the average biomass of individual trees was calculated using data collected by Fromer et al. (1998) whose study investigated aboveground biomass of mangrove genera which were comparable to those present on the Pacific Reef Fisheries property.

The site based survey determined that the majority of trees over 3m in height displayed a DBH of between 13 to 16cm. Trees under 3m in height generally displayed a DBH of between 3 to 5cm. Consequently, the biomass of trees of these sizes as quantified by Fromer et al. (1998) were used as the basis for the estimation of biomass at Pacific Reef Fisheries.

Results

The results of each of the four quadrats sampled are included below in Table 2. Stem counts for each quadrat were undertaken for trees over and under 3m in height, and the density calculated on a per hectare basis.

Table 2 – Results of quadrat data

| Quadrat | Area of quadrat surveyed | Species Present | Canopy height | Number trees over 3m | Density of trees over 3m | Number of trees under 3m | Density of trees under 3m |
|----------------|--------------------------|---|---------------|----------------------|--------------------------|--------------------------|---------------------------|
| 1 | 220m ² | <i>Avicennia marina</i> | 5m | 44 | 2000/ha | 84 | 3818/ha |
| 2 | 320m ² | <i>Avicennia marina</i> , <i>Exocoeria agallocha</i> | 6m-8m | 40 | 1250/ha | 34 | 1063/ha |
| 3 | 400m ² | <i>Avicennia marina</i> , <i>Aegilitis annulata</i> | 7m | 62 | 1550.5/ha | 64 | 1600/ha |
| 4 | 300m ² | <i>Avicennia marina</i> , <i>Rhizophora stylosa</i> , <i>Ceriops sp.</i> , <i>Aegilitis annulata</i> | 6m | 85 | 2833/ha | 183 | 6100/ha |
| Average | | | | | 1908.375/ha | | 3415.25/ha |

According to Fromer et al. (1998), the aboveground biomass weight of mangroves in their study for *Avicennia* mangroves which measured 13cm in DBH was 71.8kg and 15.5cm was 87.6kg. An average figure of these two biomass weights was calculated to be 79.7kg. As the majority of mangroves over 3m in height ranged between these DBH values, this average weight reported by Fromer et al. (1998) is used as the basis for calculating mangrove biomass at Pacific Reef Fisheries.

Also according to Fromer et al. (1998), the aboveground biomass weight of *Avicennia* mangroves in their study which measured 3.5cm and 4.5cm DBH weighed 2.8kg and 5.7kg respectively. The average weight between these two values of 4.25kg has been utilised as the value for trees under 3m in height.

Consequently, the average mangrove biomass per hectare was calculated using these values and the average stem count for trees over and under 3m in height across all four (4) quadrat sites. The results are outlined in Table 3 below.

Table 3 – Calculation of total biomass of mangroves per hectare

| | Average weight of tree | Stems per hectare | Total biomass per hectare |
|----------------|------------------------|-------------------|---------------------------|
| Trees over 3m | 79.7kg | 1908.375 | 152.10 t/ha |
| Trees under 3m | 4.25kg | 3415.25 | 13.37 t/ha |
| | | | 165.47 t/ha |

This biomass of 165.47 t/ha is comparable to the findings of Fromer et al. (1998) who reported two (2) stands of mature coastal mangroves in French Guiana as containing 180 t/ha and 315 t/ha respectively. It has also not varied significantly with only a 2.32t difference from the baseline result of 168.13 t/ha taken a year earlier, although it continues a slight downward trend from initial surveys in 2014 which recorded 170.45 t/ha.

This average biomass for mangroves found on the Pacific Reef Fisheries farm was then multiplied by the number of hectares of mangroves present on the subject site.

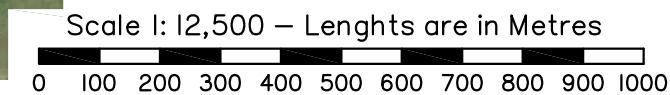
A total of 23.37 hectares of mangroves were found to be occurring on the Pacific Reef Fisheries farm site (Figure 3). A total of 3867.03 tonnes of mangrove biomass was estimated to currently



LEGEND



Area of Mangroves
23.37Ha Total



gassman development perspectives
planning design environment surveying

Brisbane Office
Level 8
97 Creek Street Brisbane Q. 4000
t: (07) 32216732
f: (07) 32217308
e: mail@gassman.com.au

Gold Coast and Logan Office
Access Business Park
76 Business Street Yatala Q. 4207
t: (07) 38073333
f: (07) 32875461
w: www.gassman.com.au

| Issue | Date | Description | DRN | CHK |
|-------|----------|----------------|-----|-----|
| - | 05-05-14 | ORIGINAL ISSUE | SJH | MDS |

Project: Trent Road, Alva Beach
Lot 1 on RP804106

Client: Pacific Reef Fisheries

©2012 Gassman Development Perspectives
All rights reserved. No part of this document may be reproduced or transmitted in any form or by any means, electronic, mechanical, photocopying, recording, or otherwise, without the written permission of Gassman Development Perspectives.

NOTE:
The details of this plan have been prepared based on the most current Digital Cadastral Data Base (DCDB) information available from Queensland Department of Environment and Resource Management and is subject to survey.

Scale at A3: 1:12,500
Date: 12-05-14
Design: MDS
Drawn: SJH
Checked: MDS

Drawing Title:
Figure 3
Area of Mangroves

Drawing No: FIGURE3
Revision No:

occur on the Pacific Reef Fisheries farm site (Table 4) in contrast to 3983.42 tonnes of mangrove biomass estimated to be occur in April 2014 and 3929.20 tonnes in April 2015 (Table 5). Across all sites, trees over 3m in height had either remained constant or slightly reduced and trees under 3m in height had increased at Quadrats 1 and 3, and decreased at Quadrats 2 and 4. This represents a total reduction in biomass of only 1.53% from last year's results which is considered to be negligible.

Table 4 – Total biomass of mangroves for Pacific Reef Fisheries Farm

| Total biomass per hectare | Total hectares of mangroves | Total biomass for entire farm |
|---------------------------|-----------------------------|-------------------------------|
| 165.47 t/ha | 23.37 ha | 3867.03 tonnes |

Table 5 – Total biomass of mangroves for Pacific Reef Fisheries Farm (baseline results, April 2014, April 2015)

| Year | Total biomass per hectare | Total hectares of mangroves | Total biomass for entire farm |
|------|---------------------------|-----------------------------|-------------------------------|
| 2014 | 170.45 t/ha | 23.37 ha | 3983.42 tonnes |
| 2015 | 168.13 t/ha | 23.37 ha | 3929.20 tonnes |

Conclusion

This study has estimated the approximate biomass of mangroves present on the Pacific Reef Fisheries site. This information is important to monitor changes in mangrove biomass which may in turn impact upon the rates of uptake of nitrogen, phosphorous and other elements over time.

In consideration of the minimal mangrove biomass previously present on the subject land prior to the construction and operation of the aquaculture farming activities, the establishment and maintenance of approximately 3929.20 tonnes of mangrove biomass is considered to be a

substantial improvement in the environmental condition of the marine habitat surrounding this locality.

Additionally, the minimal reduction of 1.53% in biomass is likely to indicate that with the exception of natural variations, no significant or sudden changes in biomass were observed or could cause any potential concerns.

It is recommended that monitoring of mangrove biomass utilising the permanent quadrats established on this initial baseline monitoring occasion occur every year to ensure the ongoing health and viability of mangroves is maintained within the farm site.

References

Fromer et al. (1998). Structure, above-ground biomass and dynamics of mangrove ecosystems: new data from French Guiana. *Oecologia* 115: 39-53.

Appendix 1 – Photographs of Mangrove Quadrats

Quadrat 1 – 4 photos



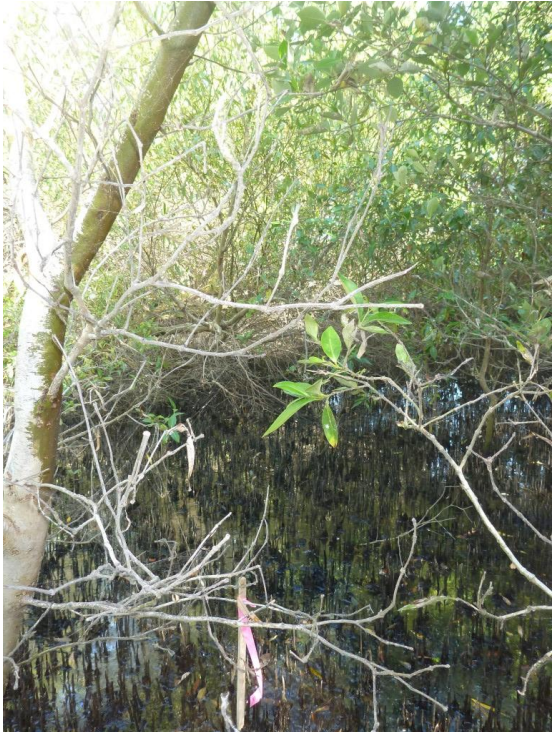


Quadrat 2 – 4 photos





Quadrat 3 – 4 photos



Quadrat 4 – 4 photos

